

RESEARCH UPDATE

EAST AND NORTH HERTS GP CLUSTER



East of England Regional Research Delivery Network | National Institute for Health and Care Research (NIHR)

In this issue:

- 1. Current study
 - 2. Types of study
 - 3. Future plans
 - 4. Whats next ?
- Get involved

Dear Colleagues,

Welcome to the East and North Herts GP Cluster Newsletter!

Your Research Team: -
Marcia Fisher (Research Nurse)
marcia.fisher@nhs.net
Nicole Stanley (Research Nurse)
nicole.stanley@nhs.net
Lisa Cotterell (Research Administration)
lisa.cottrell4@nhs.net

Together with our Principal Investigators (nominated GP in each participating surgery) we actively source and facilitate the research projects as they become available.

We assess their suitability for General Practice, their content and subject matter. Searches are undertaken for patient numbers and expressions of interest are submitted.

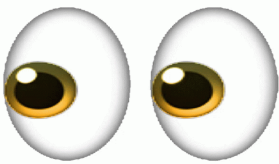
Once a study is set up and running, whether it is data collection or clinical interactions with patients, your research team undertakes the work needed to fulfil the study requirements.

On completion of a study or meeting the study requirements there is a financial reward which is forwarded to the surgeries that have taken part in the study.

A few extra pennies in the pot for the surgery is always a welcome bonus.

As we reflect on the past few months, we're excited to share some of the key highlights, updates, and upcoming events with you. Thank you for your continued support!

We hope you find this issue informative and inspiring. Take a look !



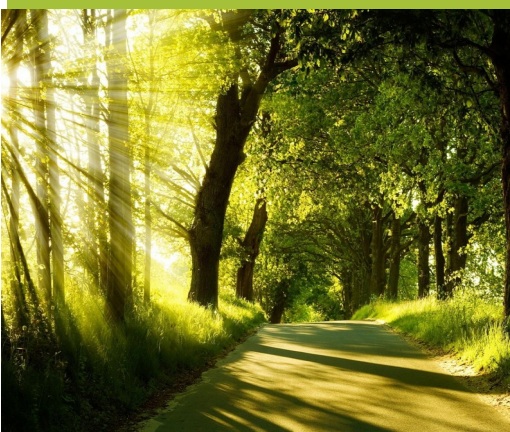
Types of Study

Academic

These studies are proposed via universities as part of a research proposal. Sometimes they are simply data collection or may involve patient participation. These studies usually are long running and nationwide to gather a large amount of data.

Commercial

These studies are proposed by pharmaceutical companies who are doing medication trials. These often involve much more participation by the research team but bring a much higher financial reward.



CURRENT STUDIES

Highlights:

- SPIROMAC
- ELSA
- STARFISH
- STABILISE



RESEARCH UPDATE

EAST AND NORTH HERTS GP CLUSTER

East of England Regional Research Delivery Network | National Institute for Health



WHAT'S NEXT ?

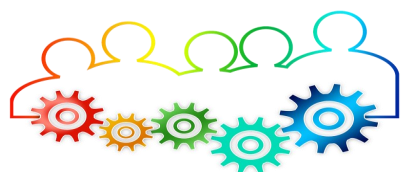
- OPACE
- G SQUARED
- Hopefully if successful with our funding bid we will be able to increase our capacity to enrol in studies
- We would also like to be able to involve our diverse populations of different ethnicities or genders in our research work and would be keen to know if you have any ideas how we can do this.



FUTURE PLANS

In May we put in a bid for some extra funding to enable us to purchase specialist equipment and secure facilities for a purpose built space that we can expand our research projects. We would like to move into participation of commercial studies which ultimately bring in more revenue for the participating surgeries on completion.

We also are trying to set our cluster up as a Hub and Spoke site. This will enable us to liaise with just one Principal Investigator (GP) rather than engaging with multiple different PI across the surgeries which can be time consuming and difficult to co ordinate with everybody's busy schedules.



Get involved

Are you interested in Research? Would you like to become involved?

- If you are a GP or a Nurse, you can get involved
- Contact the research team for the details of the research training that needs to be completed to enable you to take part.
- If you have any questions or suggestions, feel free to reach out to us at :-

lisa.cottrell4@nhs.net

Thank You for taking time to read our newsletter

We look forward to staying connected and continuing our journey together. Be sure to check out the exciting things ahead!